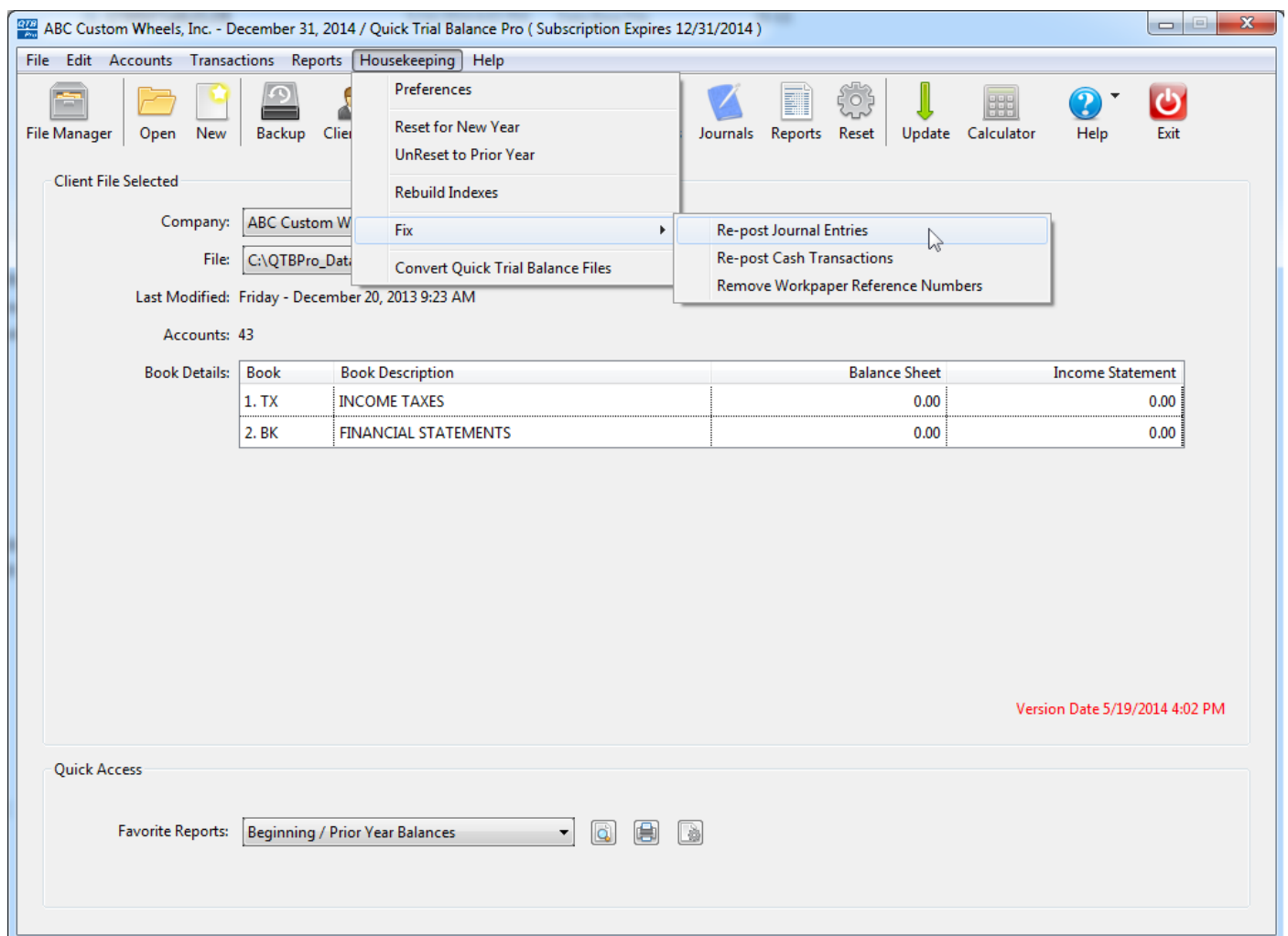


Quick Trial Balance Pro - Re-post Journal Entries

Re-post Journal Entries

If for some reason your journal entries do not match your journal entry totals, you can re-post journal entries to fix the problem. The Re-post Journal Entries option is located under the Housekeeping -> Fix menu.



Re-post Journal Entries

When the Re-post Journal Entries screen is displayed, simply click the Re-post button and the journal entries totals will be corrected based on the journal entries entered on the Journal Entries screen.

