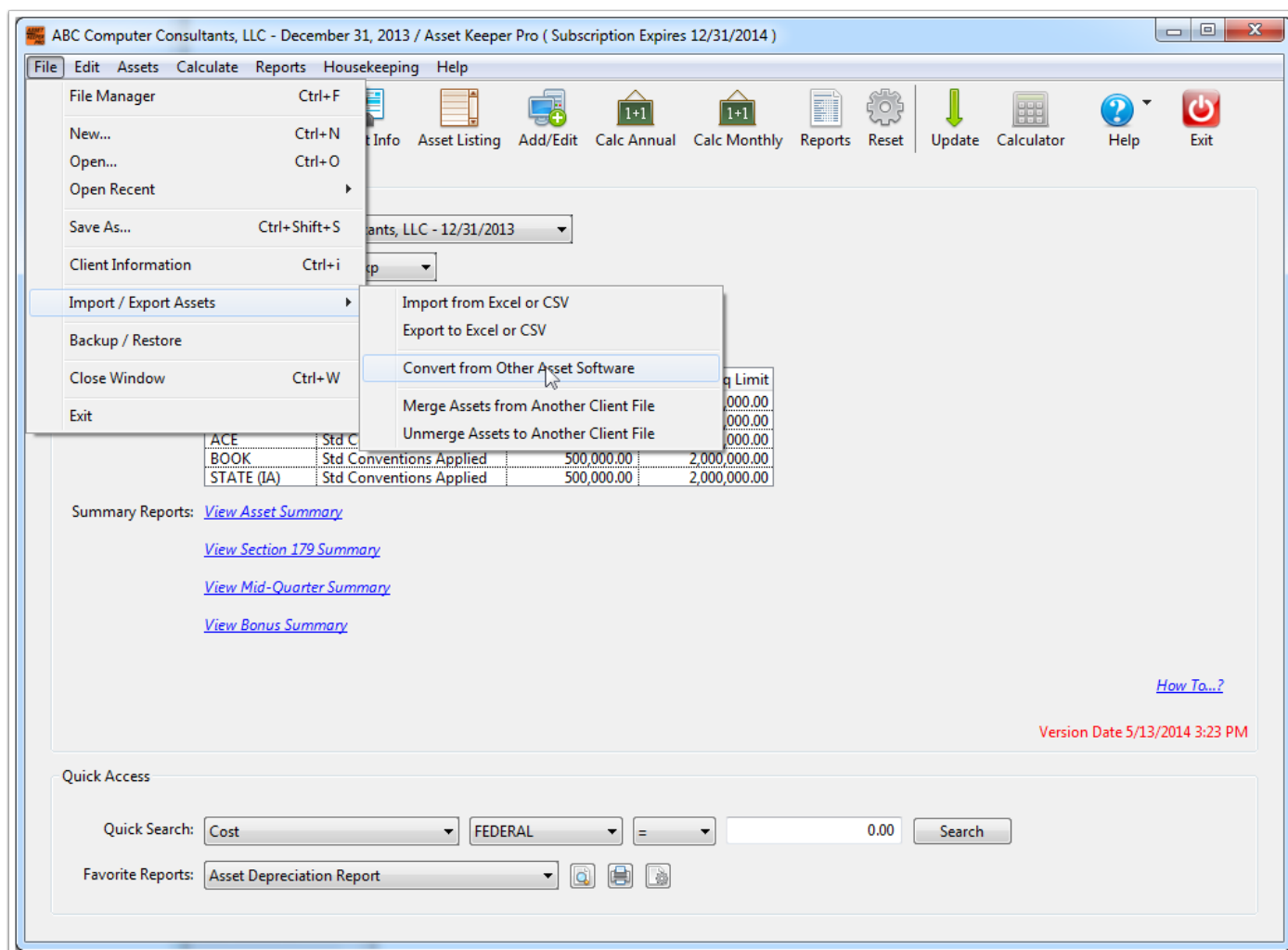


Asset Keeper Pro - Convert from Other Asset Software - ProSystem FX Assets

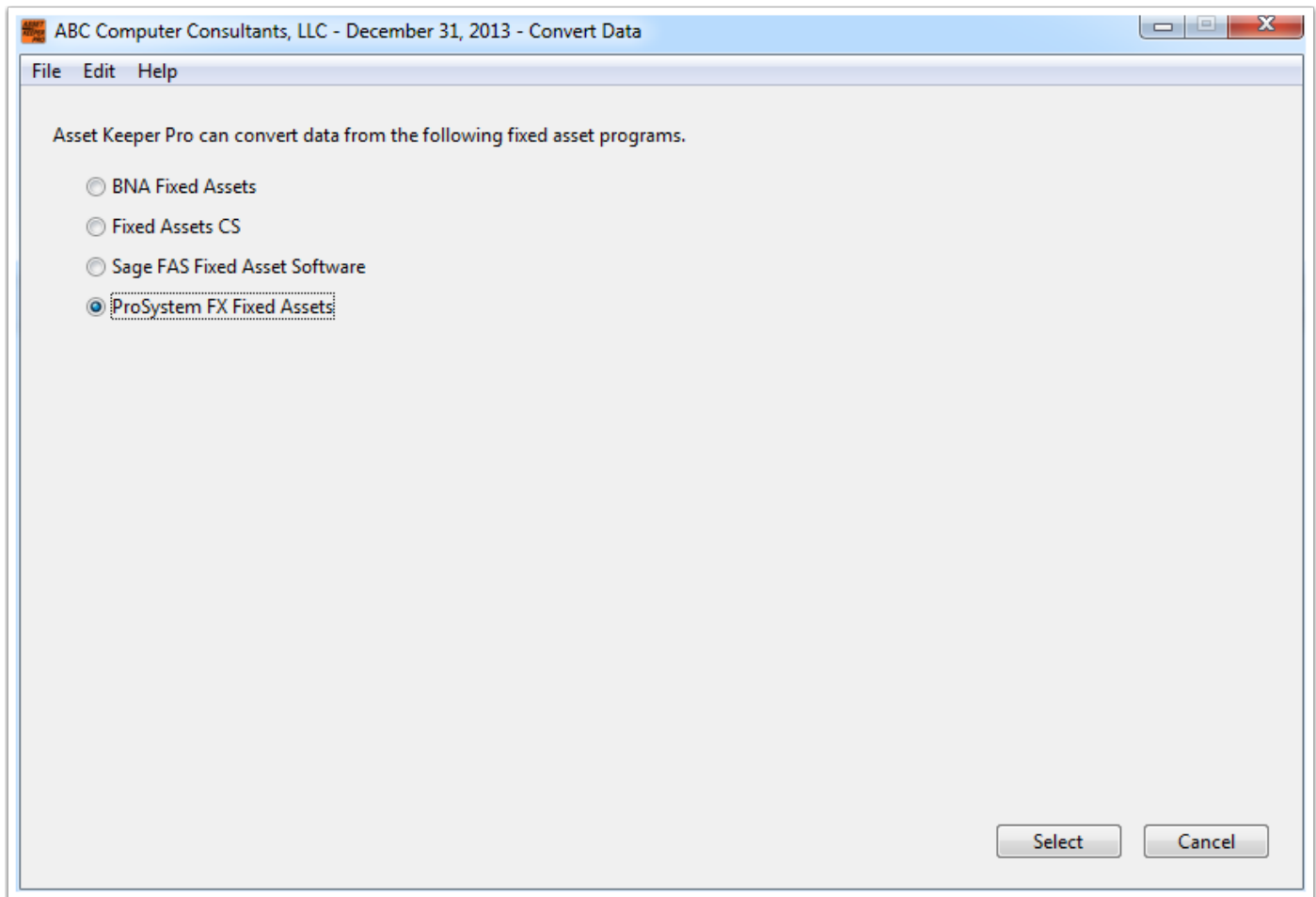
Convert from Other Asset Software

To convert data from ProSystem FX, select the Convert from Other Asset Software option in the File, Import / Exports Assets submenu.



Select other fixed asset program

On this screen, you select what fixed asset program you are converting from. Since you are converting from ProSystem FX, you would select the fourth option.



View ProSystem FX conversion instructions

Before proceeding, click the "View ProSystem FX conversion instructions" option at the bottom of the screen to view or print the conversion instructions.

The screenshot shows a software window titled "ABC Computer Consultants, LLC - December 31, 2013 - Convert ProSystem FX Data". The window has a menu bar with "File", "Edit", and "Help". Below the menu bar, there are two text input fields with folder icons to their right. The first field is labeled "Excel file containing ProSystem FX data to convert:" and the second is labeled "Location and Name of AKPro file to be created:". Below these fields is a section titled "ProSystem FX Conversion Field Mapping" containing two radio buttons: "Use AKPRO defaults" (which is selected) and "Set MY field mappings". To the right of these radio buttons is a button labeled "Field Mappings". Below this section is another section titled "Data files are from the following version of ProSystem FX:" containing two radio buttons: "Version 2012 and later" (which is selected) and "Version 2008 - 2011". At the bottom left of the window is a blue hyperlink labeled "View ProSystem FX conversion instructions". A red arrow points from a grey callout box to this link. The callout box contains the text "Click this link to view instructions. Read instructions thoroughly before proceeding." At the bottom right of the window are two buttons: "Convert" and "Cancel".

ABC Computer Consultants, LLC - December 31, 2013 - Convert ProSystem FX Data

File Edit Help

Excel file containing ProSystem FX data to convert:

Location and Name of AKPro file to be created:

ProSystem FX Conversion Field Mapping

☒ Use AKPRO defaults ☐ Set MY field mappings Field Mappings

Data files are from the following version of ProSystem FX:

☒ Version 2012 and later ☐ Version 2008 - 2011

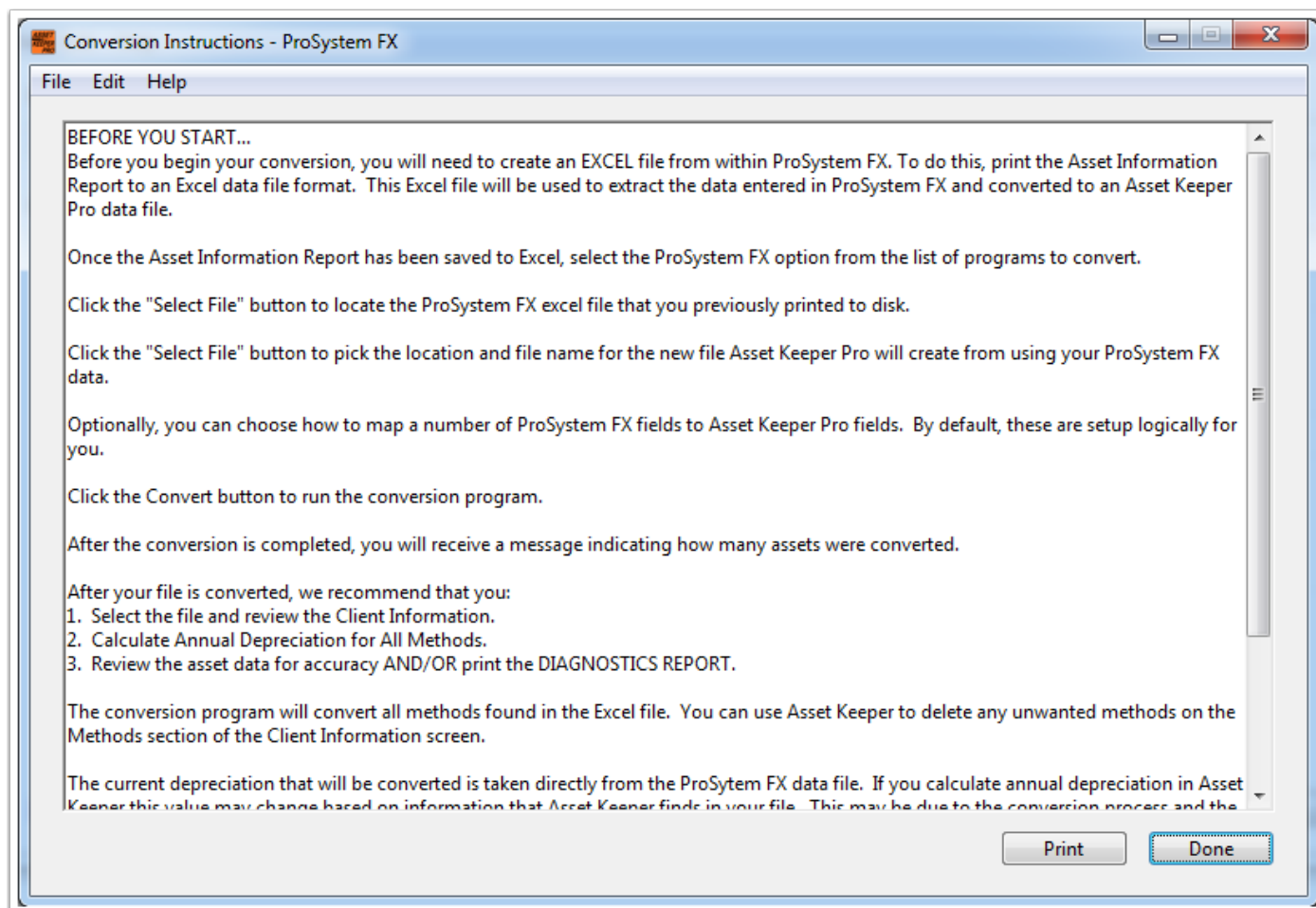
[View ProSystem FX conversion instructions](#)

Click this link to view instructions.
Read instructions thoroughly before proceeding.

Convert Cancel

ProSystem FX Instructions

Be sure to read the instructions thoroughly before proceeding with the conversion of your data.



ProSystem FX Conversion Options

When you have created the Asset Information Report Excel file in ProSystem FX, you are then ready to convert your data. You will need to select the Excel file that you created in ProSystem FX using the folder select button.

ABC Computer Consultants, LLC - December 31, 2013 - Convert ProSystem FX Data

File Edit Help

Excel file containing ProSystem FX data to convert:

Location and Name of AKPro file to be created:

ProSystem FX Conversion Field Mapping

☒ Use AKPRO defaults ☐ Set MY field mappings [Field Mappings](#)

Data files are from the following version of ProSystem FX:

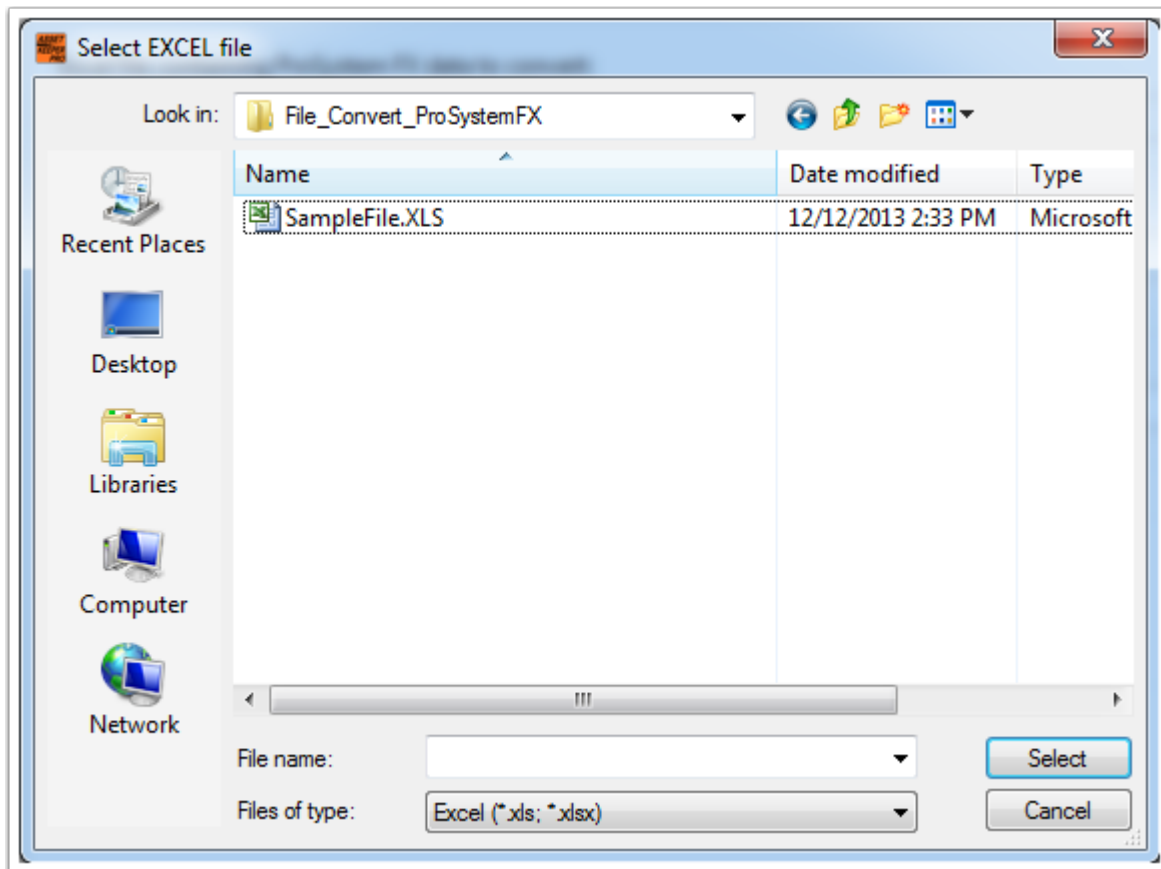
☒ Version 2012 and later ☐ Version 2008 - 2011

[View ProSystem FX conversion instructions](#) [How To...?](#) [Convert](#) [Cancel](#)

Click this button to select the Excel file that contains your ProSystem FX data.

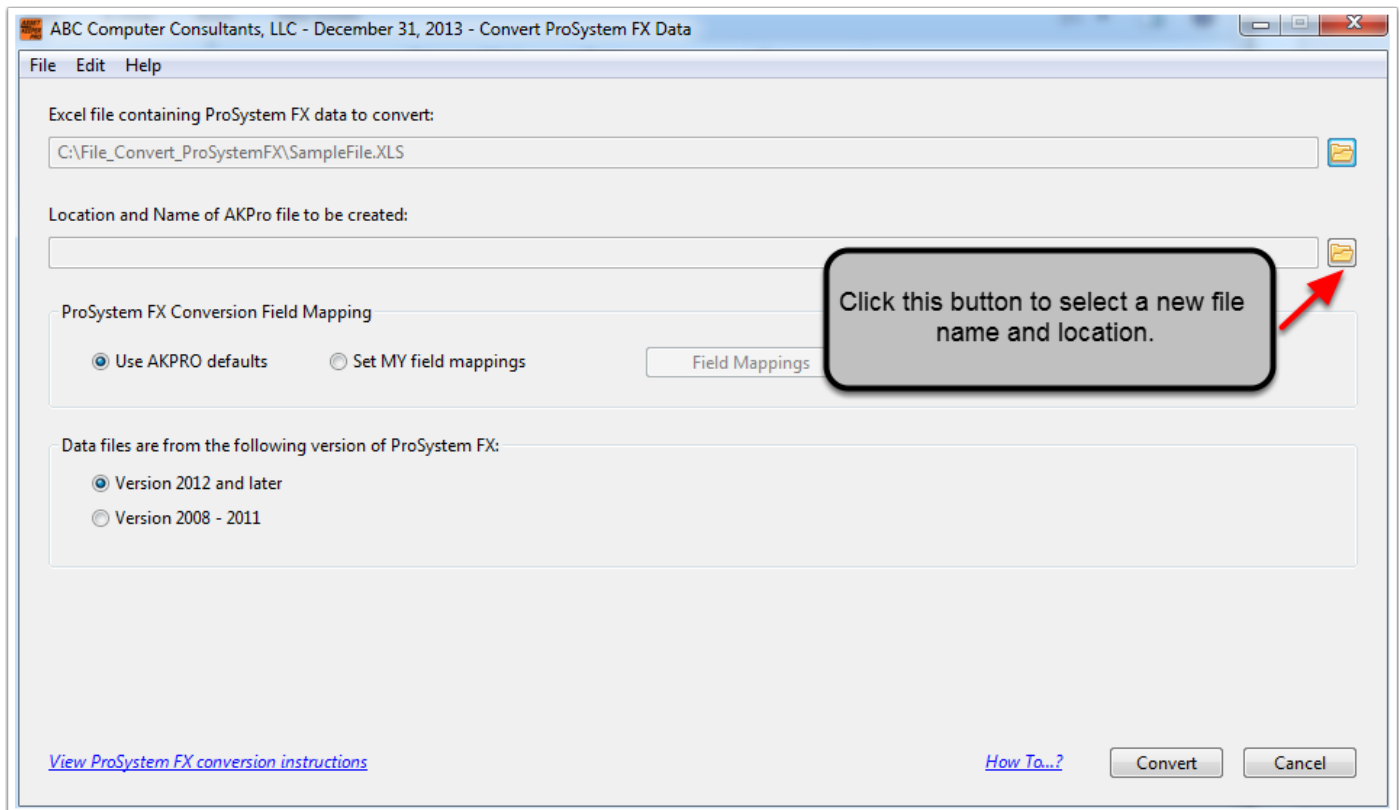
Select ProSystem FX Excel file

This is the dialog screen that is used to select one of the excel files that contains your ProSystem FX data.



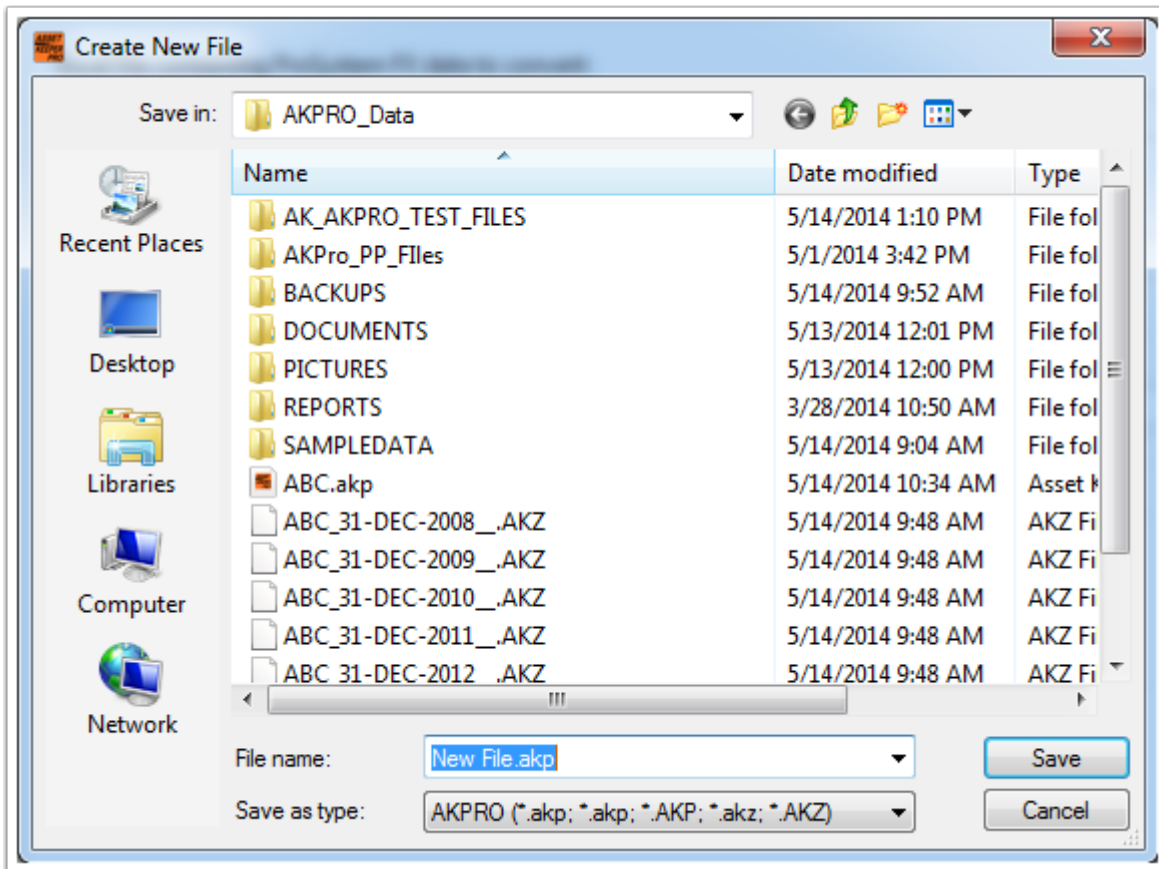
Select new file location and name

Next you will need to select the name and location for the new file Asset Keeper Pro will create from your converted data.



Create New File

After clicking the folder selection button, you will be prompted to select a location and enter a filename for your Asset Keeper Pro data file that will contain your converted data. If you enter a filename that already exists, you will be asked if you want to overwrite it.



Field Mapping

Finally, you can choose to use Asset Keeper Pro default for field mappings or set your own settings. If you select the 'Set MY field mappings' option, you can map certain ProSystem FX fields to select Asset Keeper Pro fields. Note that you can also save your field mappings for future conversions.

ABC Computer Consultants, LLC - December 31, 2013 - ProSystem FX Field Mappings

File Edit Help

ProSystem Field	Copy to -->	Asset Keeper Pro Field
GL Asset Account		Asset A/C#
GL Depr Exp. Acct.		Expense A/C#
GL Accum. Depr. Acct.		Accum. A/C#
Category		County
Location		Department
Serial Number		Sort Code #3
User Defined 1		Sort Code #4
User Defined 2		Sort Code #5
User Defined 3		Sort Code #6
Amortization Code Section		Description #2
Tax Link		

Restore Saved Field Mapping?

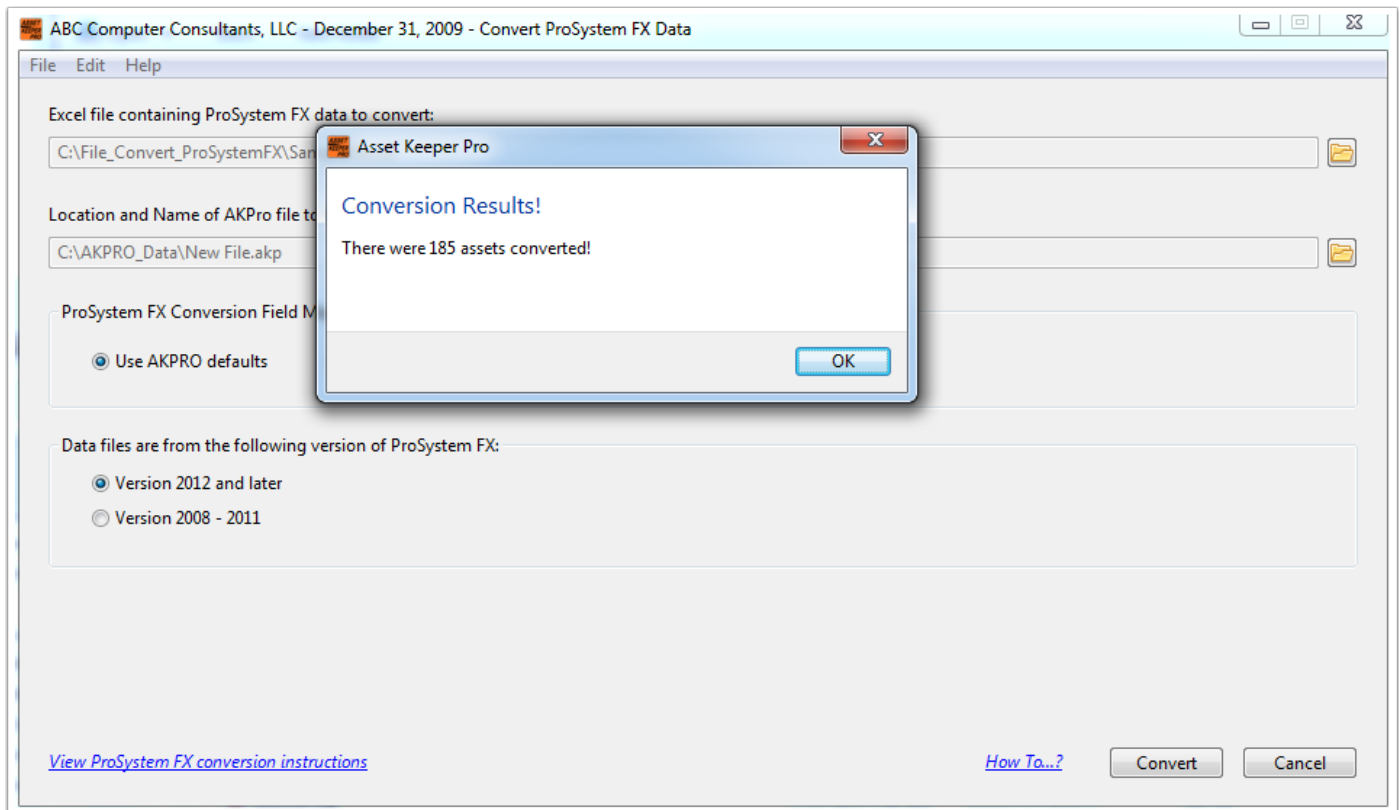
Save Field Mapping?

Done

You can save and restore field mappings for future conversions.

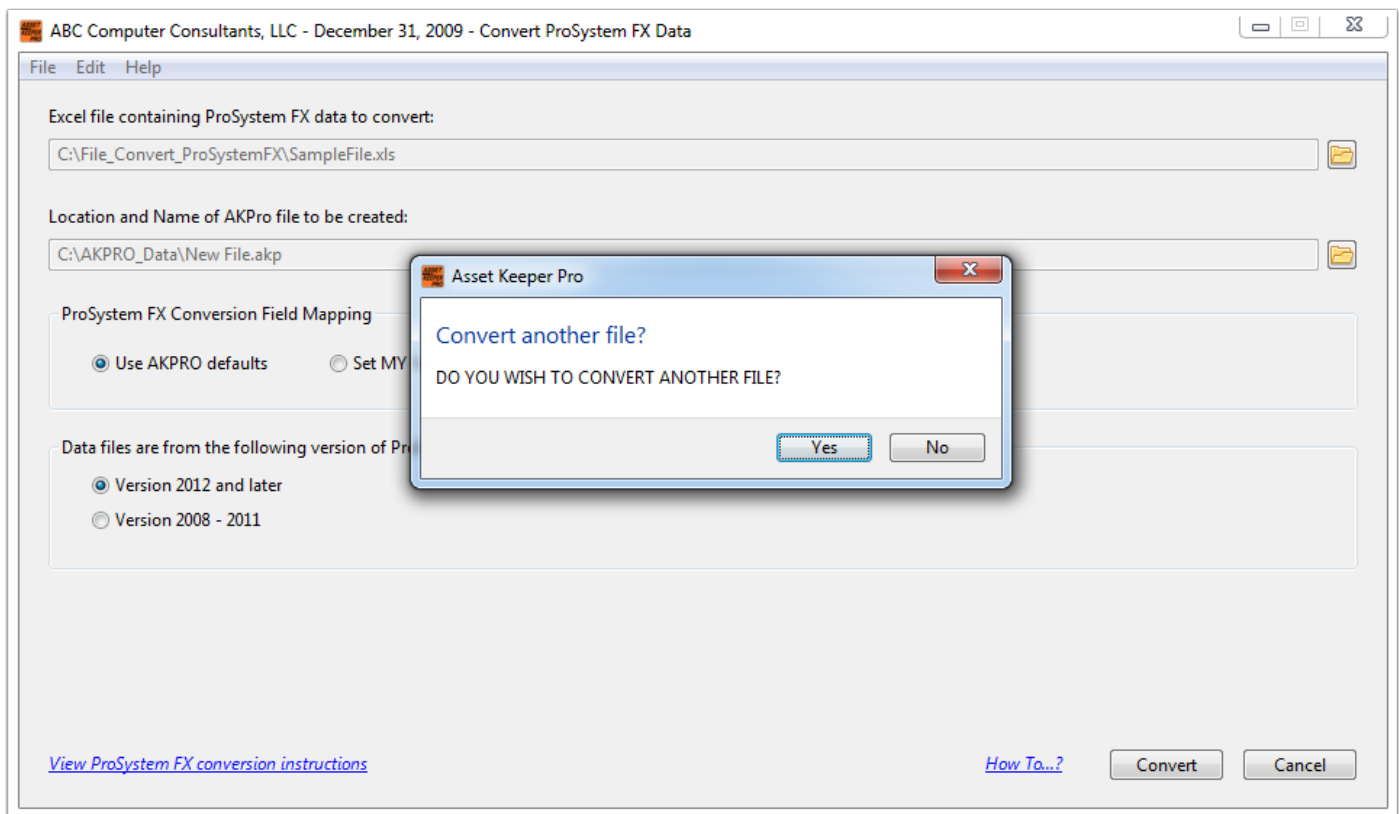
Conversion results

When you are ready to convert, click the Convert button. After your data is converted, you will see a message box that will tell you how many assets were converted.



Convert another file

You will then be asked if you want to convert additional client data from ProSystem Fx.



Select data file containing ProSystem FX converted data

After your data is converted, you can use the Open button on the Home screen toolbar to select the AKPRO data file that was created and contains your converted data.

